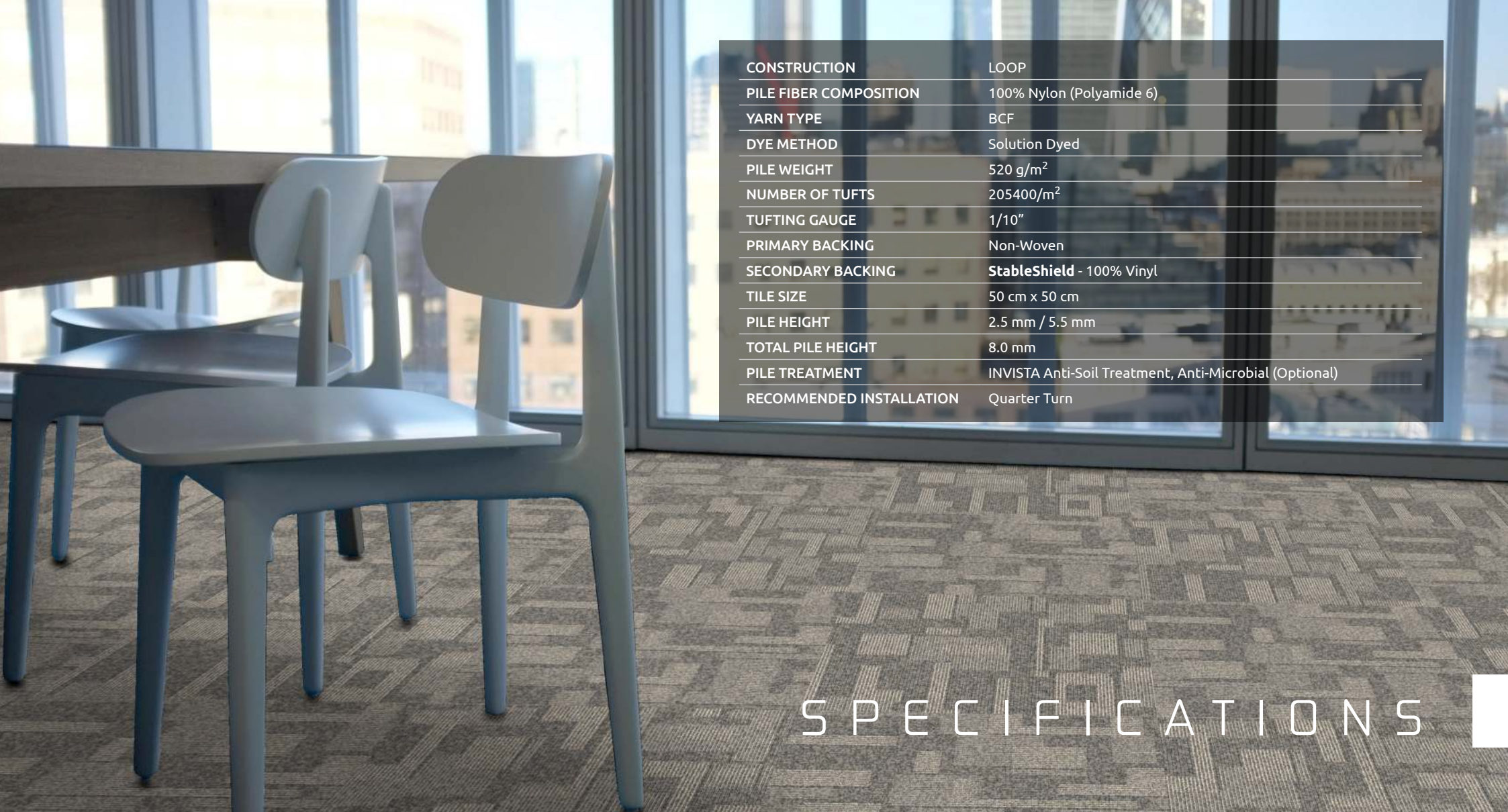




INTER SECTION

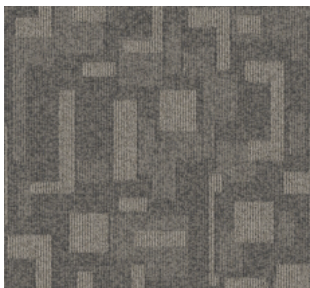




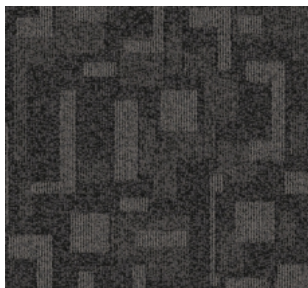
| | |
|--------------------------|--|
| CONSTRUCTION | LOOP |
| PILE FIBER COMPOSITION | 100% Nylon (Polyamide 6) |
| YARN TYPE | BCF |
| DYE METHOD | Solution Dyed |
| PILE WEIGHT | 520 g/m ² |
| NUMBER OF TUFTS | 205400/m ² |
| TUFTING GAUGE | 1/10" |
| PRIMARY BACKING | Non-Woven |
| SECONDARY BACKING | StableShield - 100% Vinyl |
| TILE SIZE | 50 cm x 50 cm |
| PILE HEIGHT | 2.5 mm / 5.5 mm |
| TOTAL PILE HEIGHT | 8.0 mm |
| PILE TREATMENT | INVISTA Anti-Soil Treatment, Anti-Microbial (Optional) |
| RECOMMENDED INSTALLATION | Quarter Turn |

SPECIFICATIONS

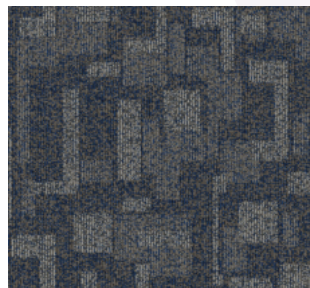
COLOURLINE



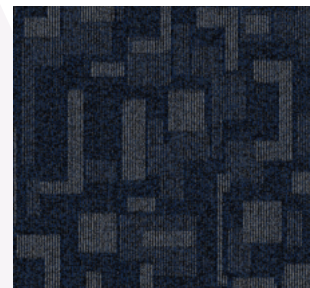
INTERSECTION - 546



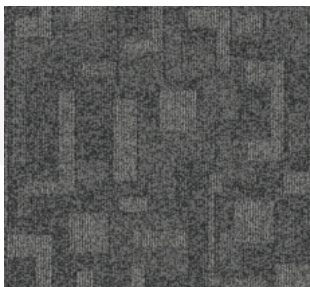
INTERSECTION - 547



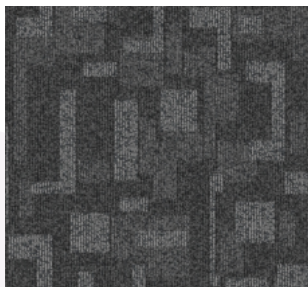
INTERSECTION - 555



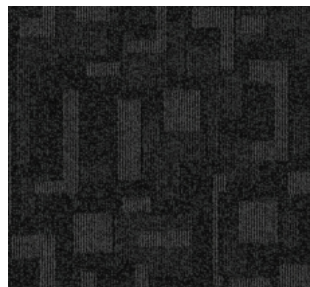
INTERSECTION - 556



INTERSECTION - 573



INTERSECTION - 575

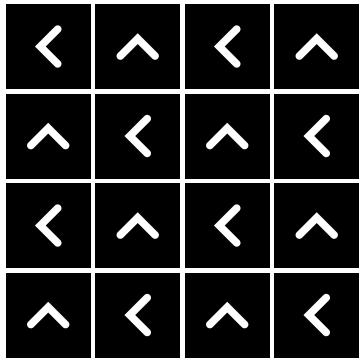


INTERSECTION - 578



HOW TO INSTALL

QUARTER TURN





Standard
CARPETS

www.standardcarpets.com